



System BLU

Installation Guide

For manual and electric cable driven models 3500lb, 4500lb, 5500lb
and for hydro-cable driven models 4500lb, 5500lb, 6500lb, 8500lb, 10000lb



Congratulations!

You have just purchased the revolutionary new BLU boat lift ballast storage system. Its patent-pending technology will provide years of effortless seasonal launching and retrieval of your boat lift, safely and without getting in the water.

We invite you to follow this installation manual and its accompanying videa to ensure a successful installation and proper functioning of your new BLU system.



WARNING

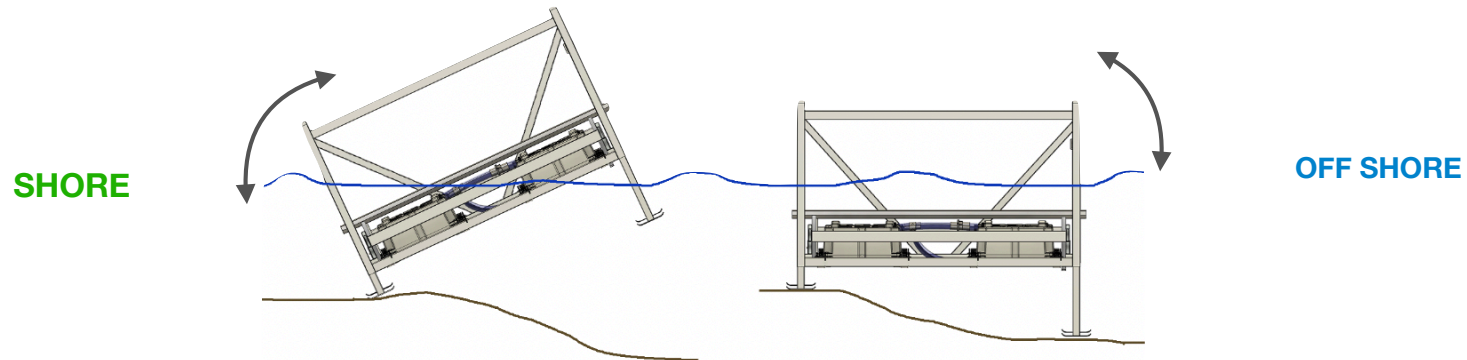
Always ensure that the lift is well balanced when floating and that there are no major air leaks in the system. For safety, the transport plugs supplied with the system must be inserted in the water intakes before launching and while lift is afloat.

Never tow the lift in deep water without first inserting the transport plugs in the water intakes.



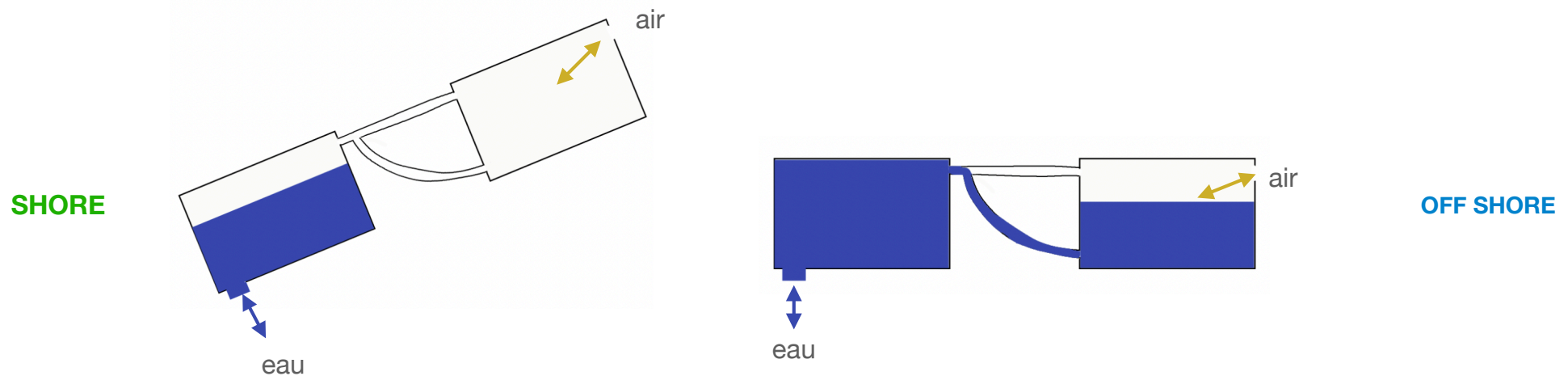
HOW DOES THE SYSTEM WORK?

To prevent the lift from tipping over when installing or removing it, it must be lowered in 2 steps. The ballast system is therefore designed so that the legs on the shore side of the elevator descend first and ascend last.



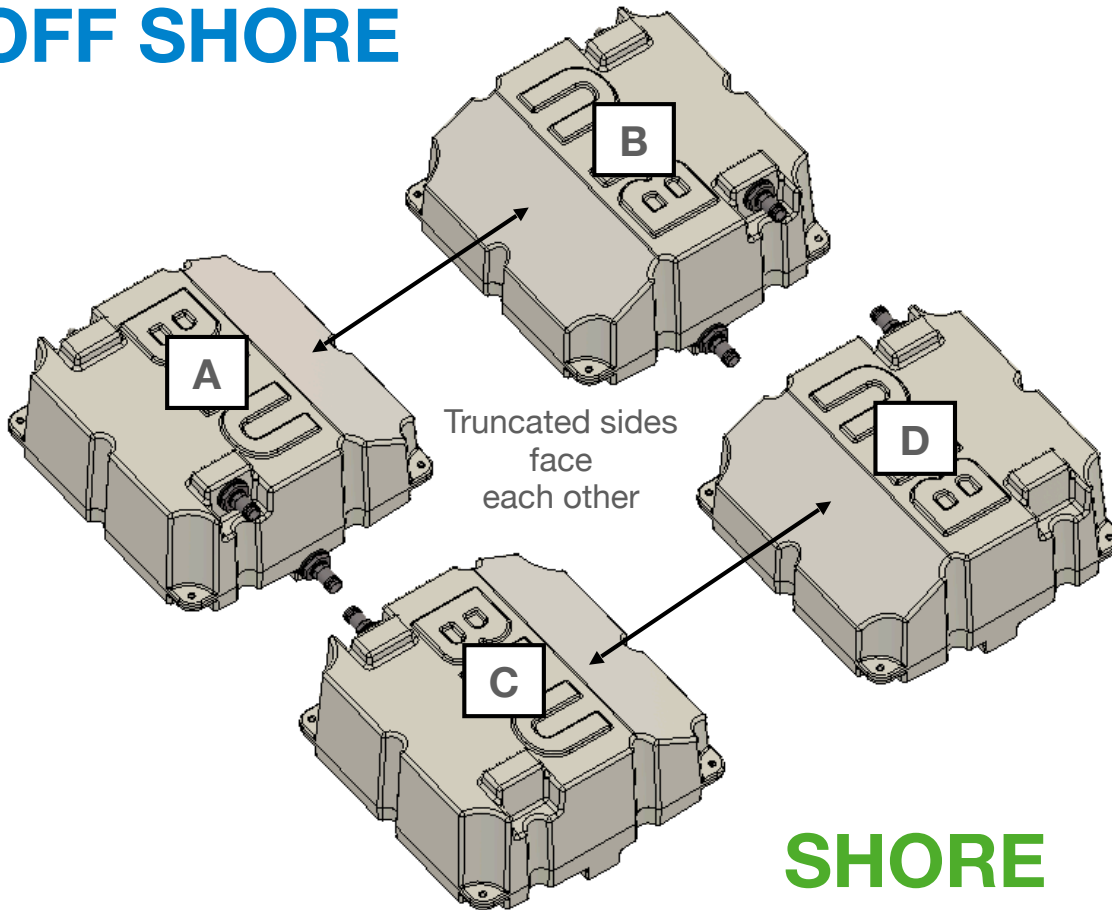
To achieve this, the ballast tanks on the shore side are each equipped with a hole to let water in and out. The off shore ballasts are equipped with an outlet connected to a master valve whose function is to let air in or out. The plumbing is designed so that the shore side ballast tanks will always fill with water first and fill with air last.

IT IS THEREFORE ESSENTIAL THAT THE VARIOUS BALLASTS ARE CORRECTLY POSITIONED.

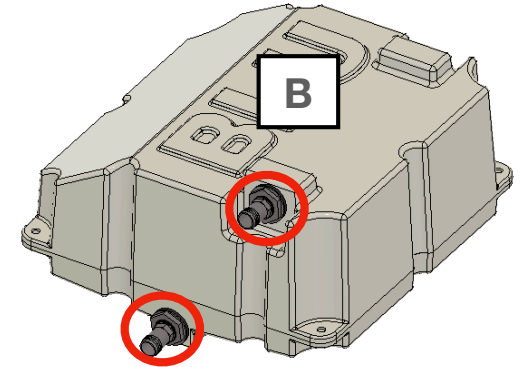


BALLAST POSITIONING

OFF SHORE

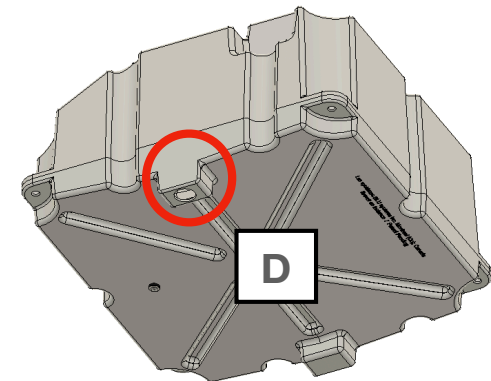


SHORE



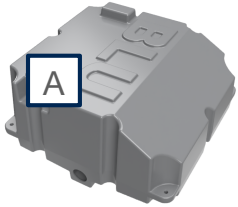
Off shore ballasts display two 2" hose connectors on the same side.

Shore side ballasts display a hole located on their bottom face and closest to shore.

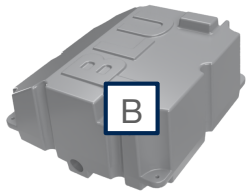


PARTS INVENTORY

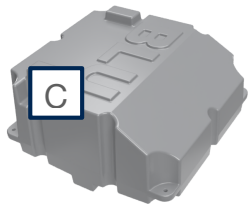
1 X BALLAST OFF SHORE/LEFT



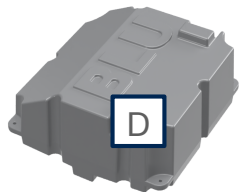
1 X BALLAST OFF SHORE/ RIGHT



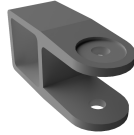
1 X BALLAST SHORE/LEFT



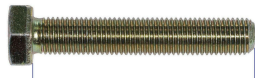
1 X BALLAST SHORE/RIGHT



16 X BALLAST BRACKETS



16 X BOLTS M12*75



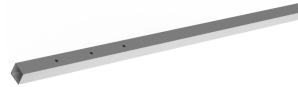
32 X FLAT WASHERS
HDPE 33*13,5*2MM



16 X SELF LOCKING BOLTS
M12 BRASS



8 x HALF CROSS MEMBERS



4 x COUPLING SLEEVES



8 X BOLTS M12*75



8 X SELF LOCKING BOLTS
M12 BRASS



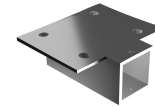
16 X BOLTS M6*80



16 X BRASS NUTS M6



8 x CROSS MEMEBER BRACKETS



8 X SQUARE U-BOLTS
1/2"-13 *4 1/2" X 6 3/4"



16 X NUTS 1/2"-13



16 X LOCK WASHERS 1/2-13



16 X SS FLAT WASHER S 1/2-13



16 X HDPE FLAT WASHERS 33*13,5*2MM



6m x FLEXIBLE HOSE 2"
3m x FLEXIBLE HOSE 1"
6m x FLEXIBLE HOSE 3/4"



HOSE SLEEVE



18 X HOSE CLAMPS 2"
2X HOSE CLAMPS 1"
4 X HOSE CLAMPS 3/4"



2 x 2"x2"x2" T FITTINGS



2 x NON RETURN VALVES



1 X REDUCER FITTING
1" X 3/4"



1 X MAIN VALVE BOX



1 X VELCRO STRAP



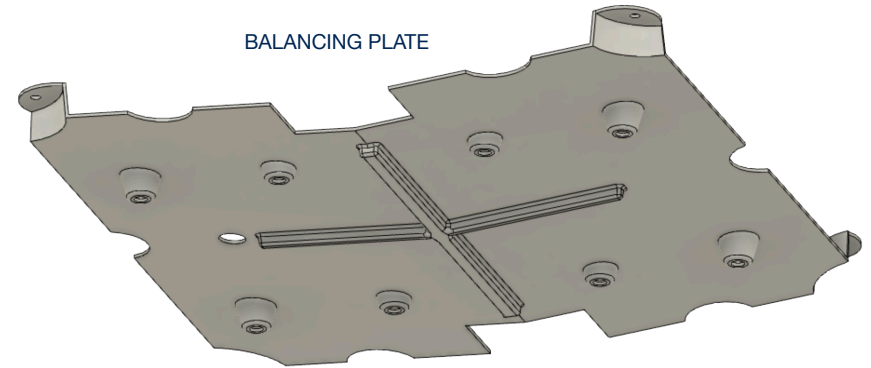
1 X TIE WRAP BAG



1 X MAIN VALVE ADAPTOR



2 x TRANSPORT PLUGS



BALANCING PLATE

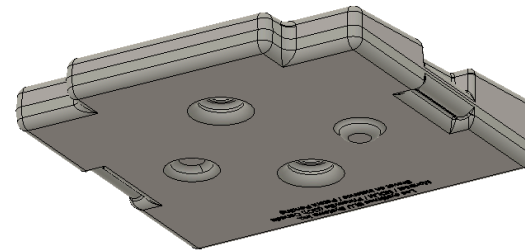
PRESSURE FITTINGS



C FITTINGS



BALANCING FLOATS



The number of balancing plates and floats vary depending on the lift.
Refer to the BLU technical sheet corresponding to your lift.

OUTILS



Wescott



Ratchet kit
(Ideally deep sockets)



Impact driver
(optionnel)



Thermal gun



Utility knife



Measuring tape



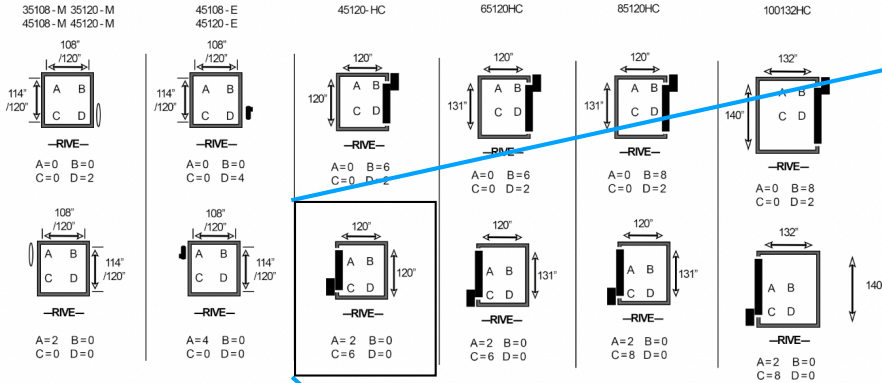
Silicone lubricant

BEFORE INSTALLING

Print your elevator's technical data sheet

The data sheets can be found on BLU website under the tabs Documentation/Installation guides

Quai de l'Estrée - Sommaire flottes de compensation par modèle



A = Ballast large gauche B = Ballast large droit
C = Ballast nve gauche D = Ballast nve droite

L'équilibrage est prévu avec batterie (s), le cas échéant.

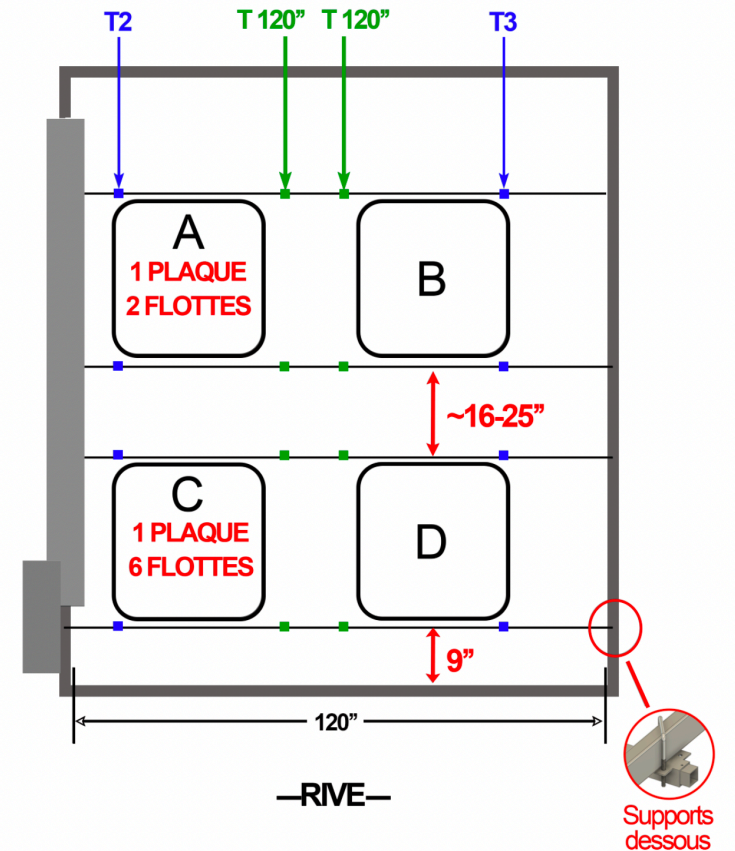
Roue pour élévateurs manuels

Moteur électrique et batterie (sans hydraulique)

Moteur, pompe, liquide, cylindre et batterie(s)

Note: Certains modèles peuvent différer en fonction des années. Toujours installer les bouchons de transport avant de mettre à l'eau.

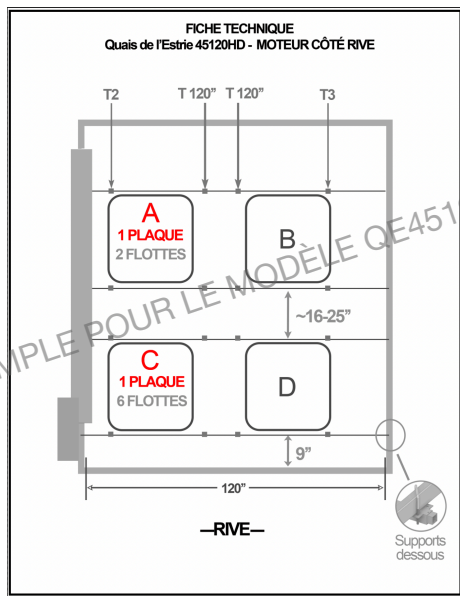
FICHE TECHNIQUE Quais de l'Estrée 45120HD - MOTEUR CÔTÉ RIVE



INSTALLATION

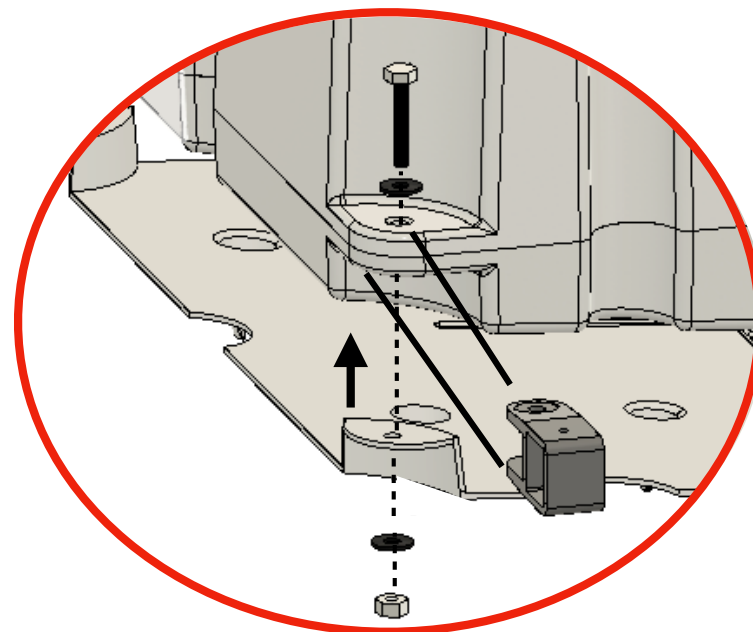
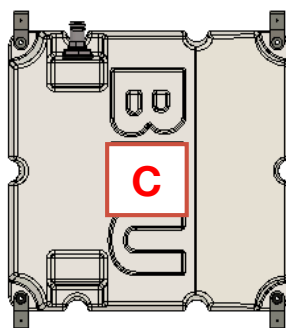
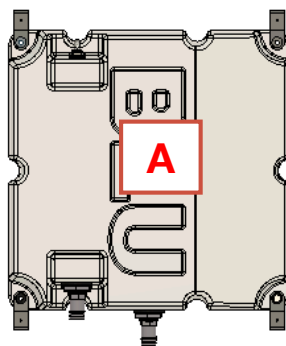


BALLAST ASSEMBLY - STEP 1

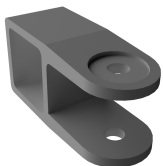
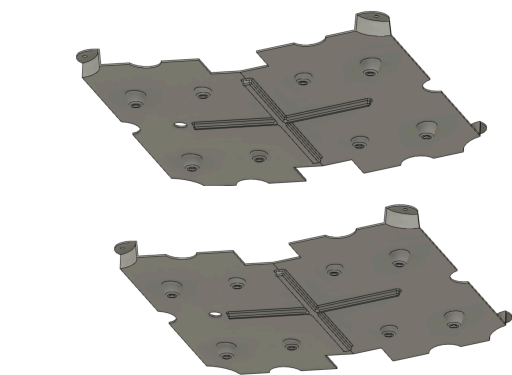


EXEMPLE POUR LE MODÈLE QE45120HD

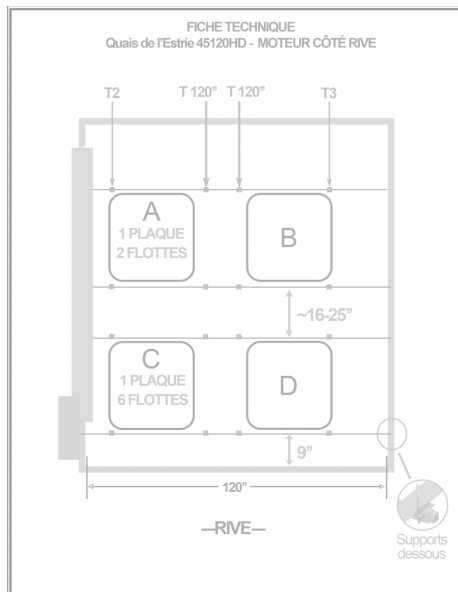
EXEMPLE QE45120HD



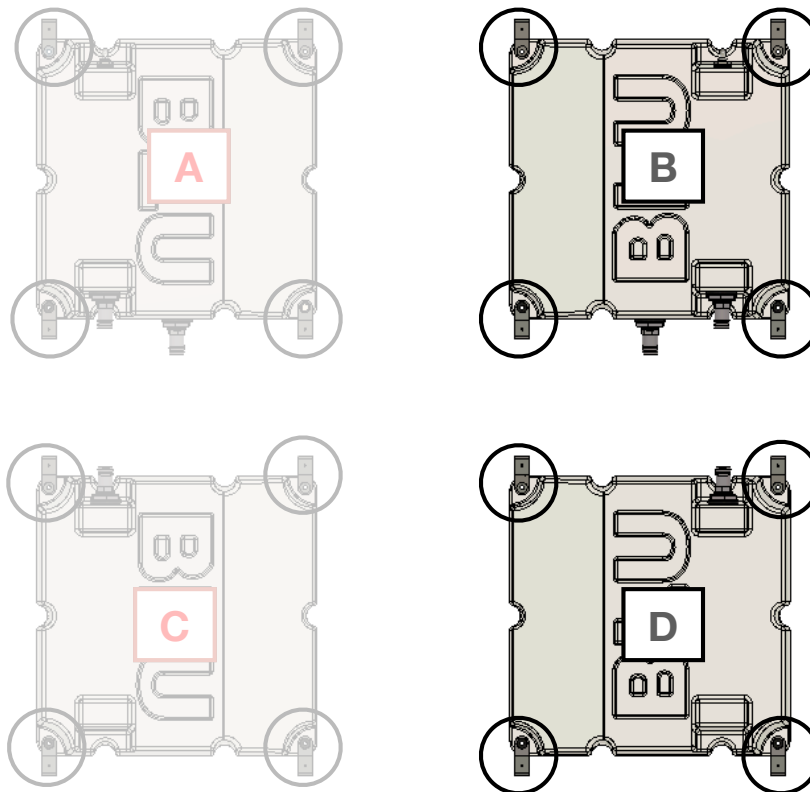
SHORE



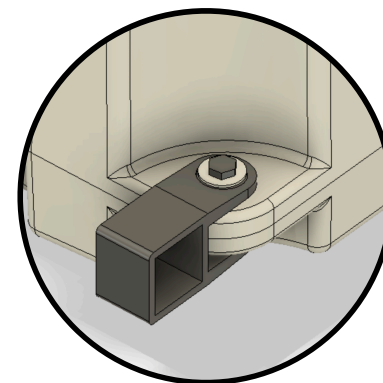
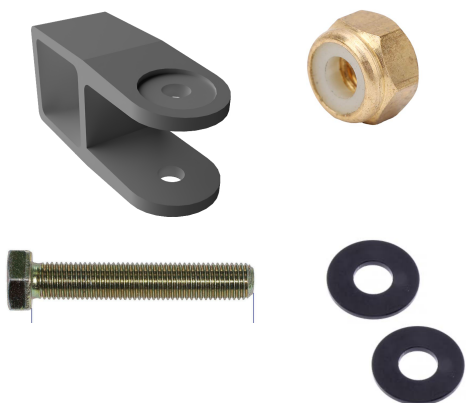
BALLAST ASSEMBLY - STEP 2



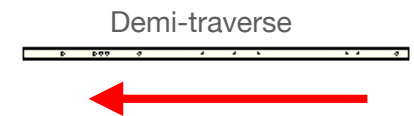
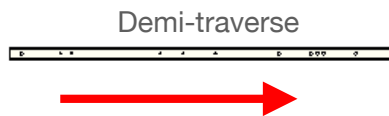
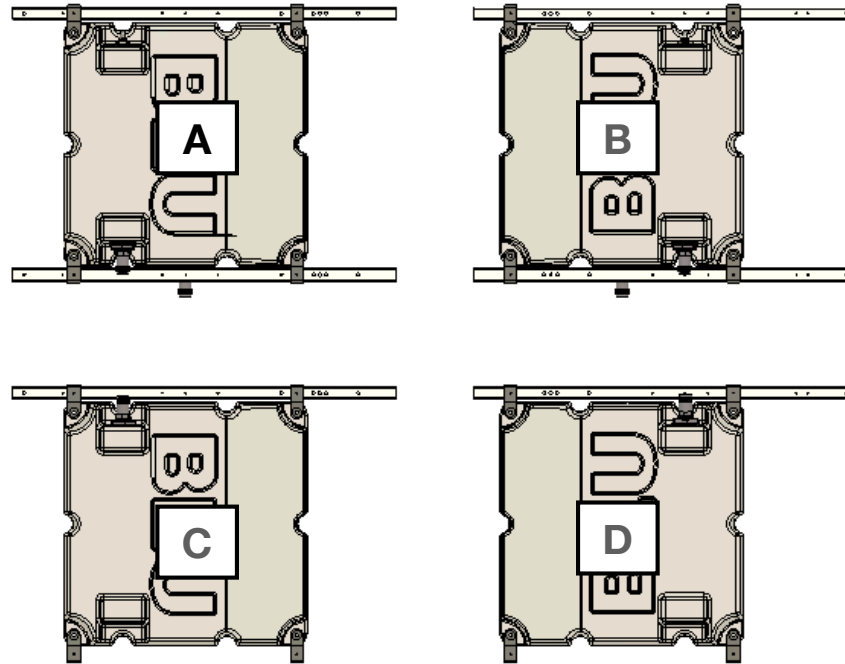
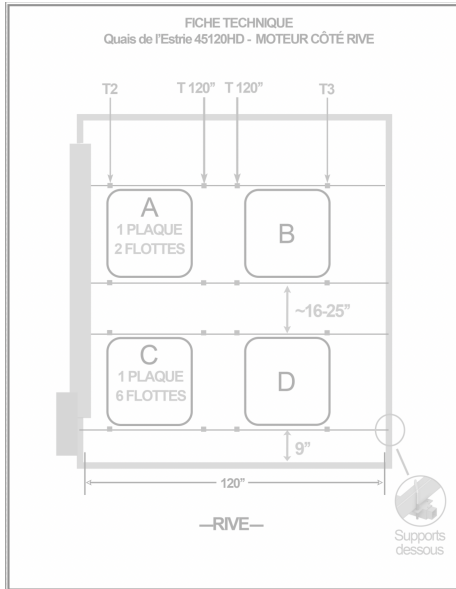
EXEMPLE QE45120HD



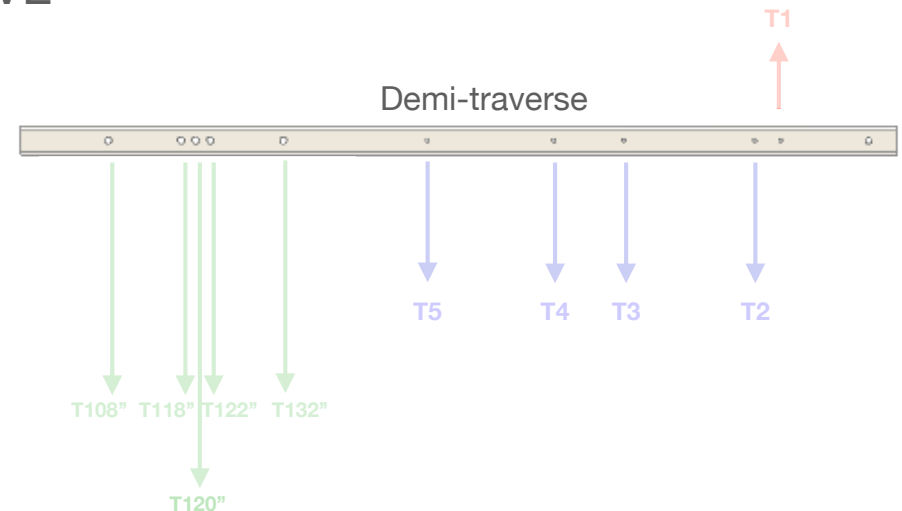
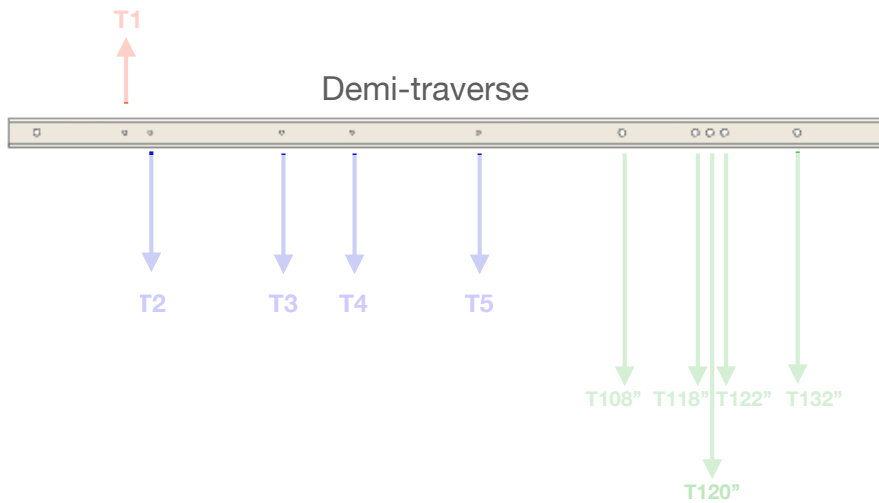
SHORE



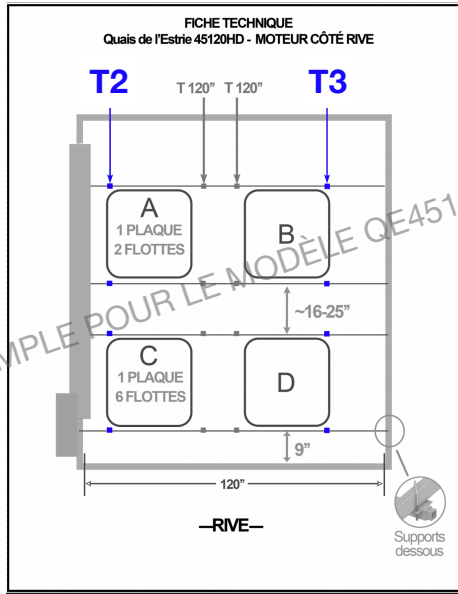
CROSS MEMBER ASSEMBLY - PART 1



RIVE

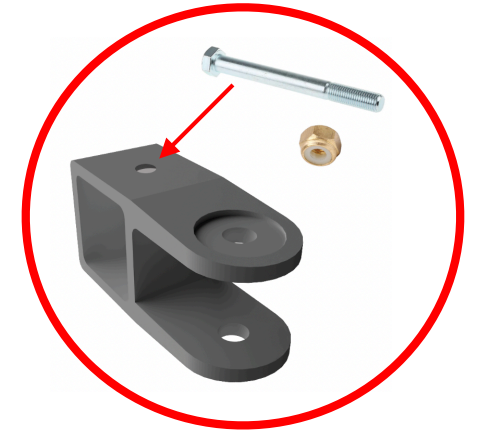
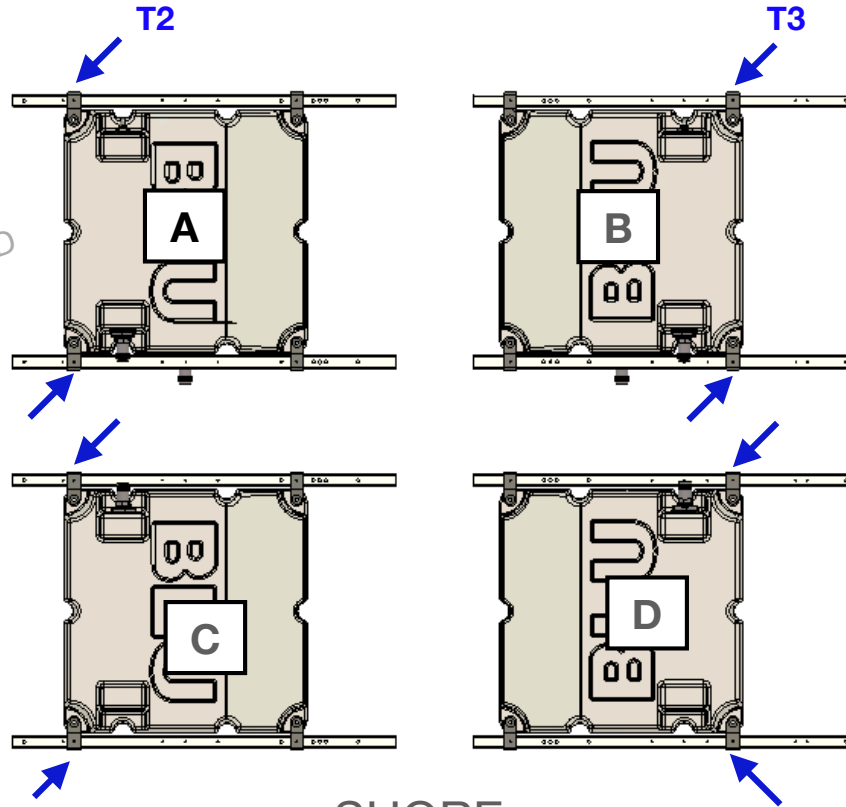


CROSS MEMBER ASSEMBLY - PART 2

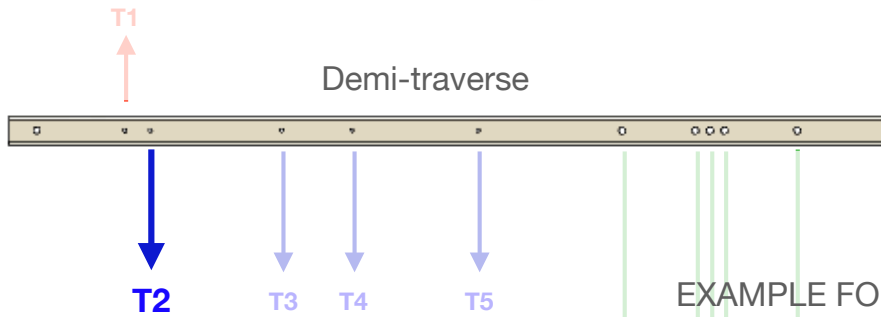


EXEMPLE QE45120HD

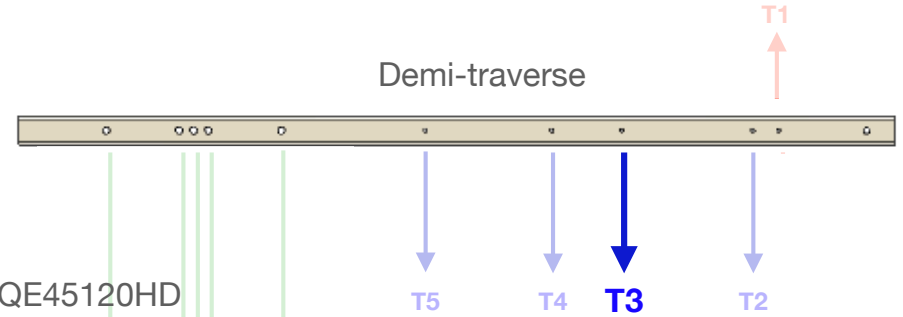
EXEMPLE POUR LE MODÈLE QE45120HD



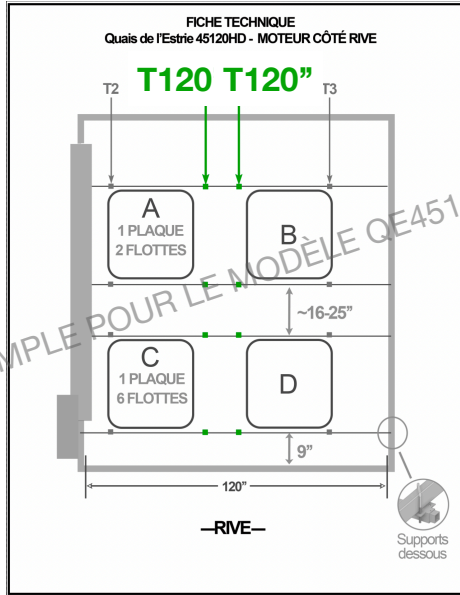
SHORE



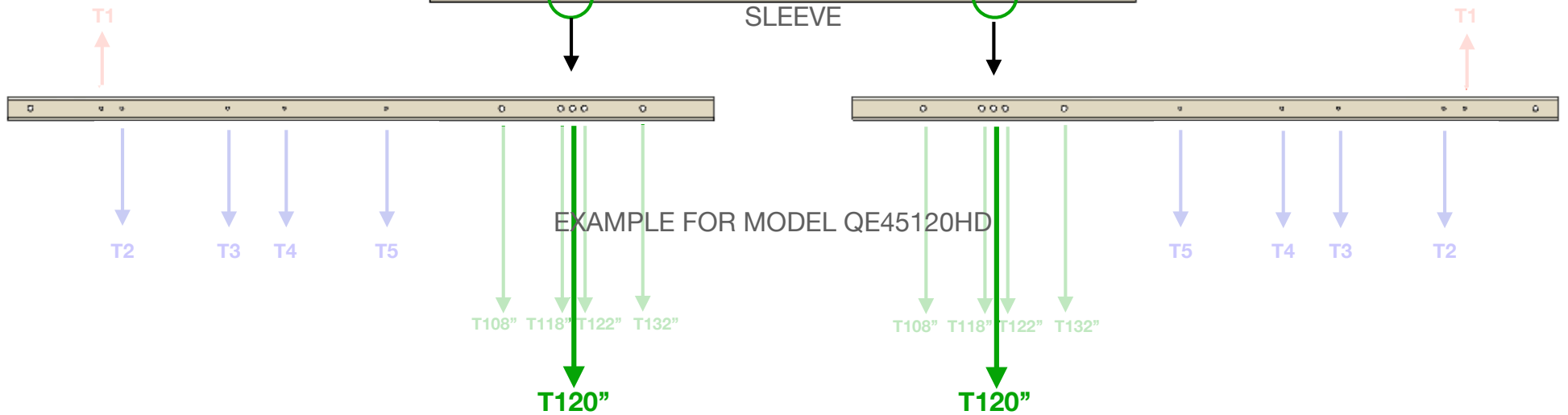
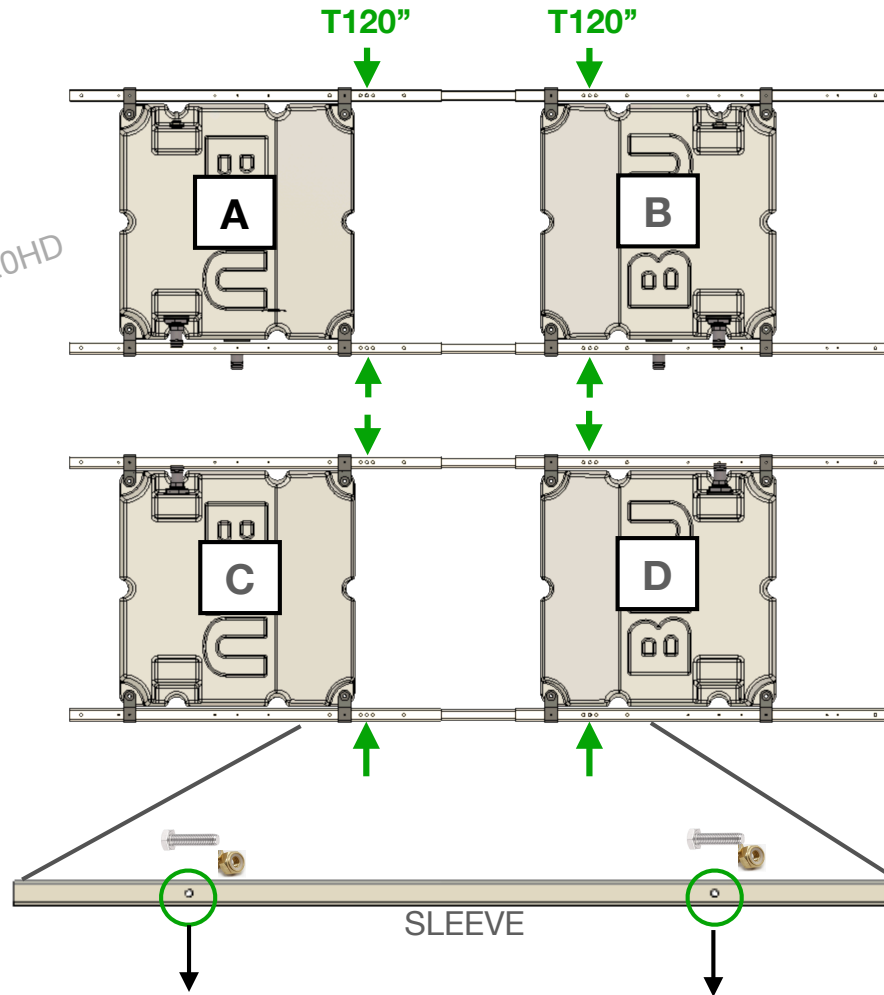
EXEMPLE FOR MODEL QE45120HD



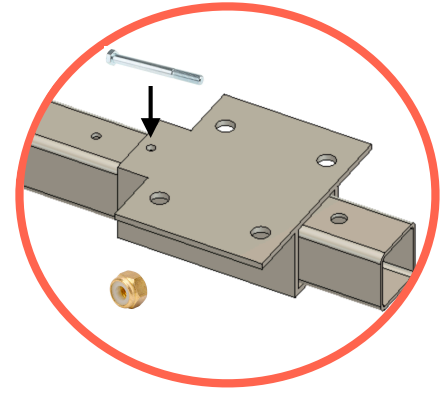
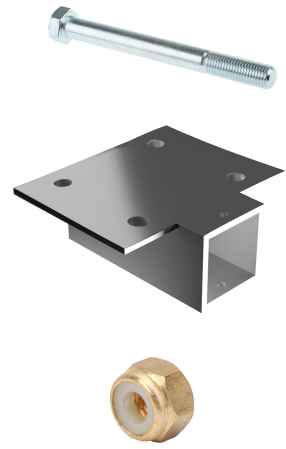
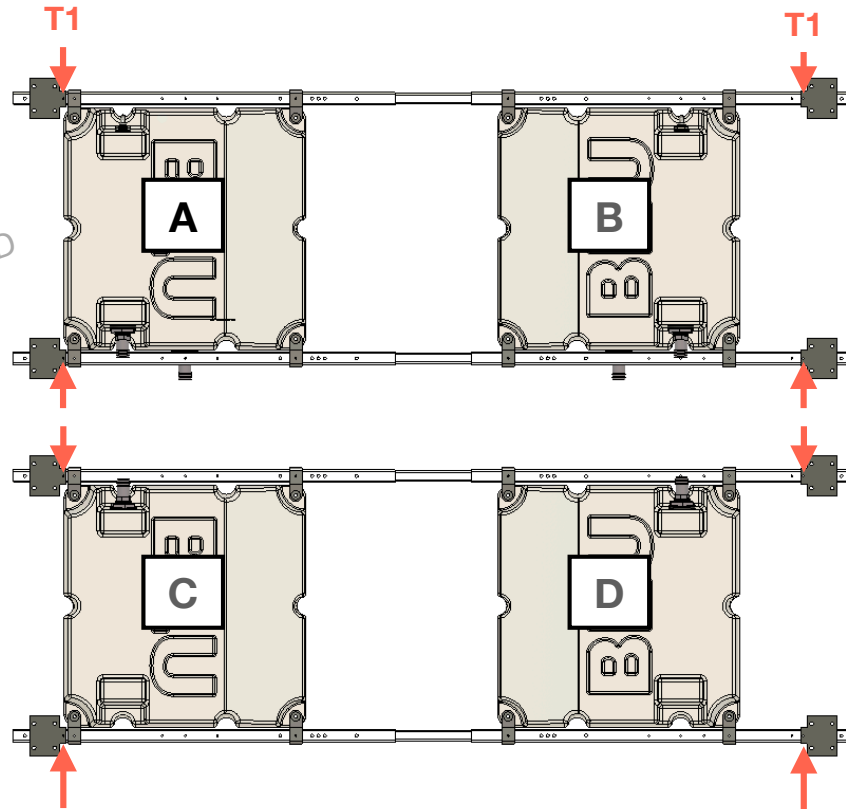
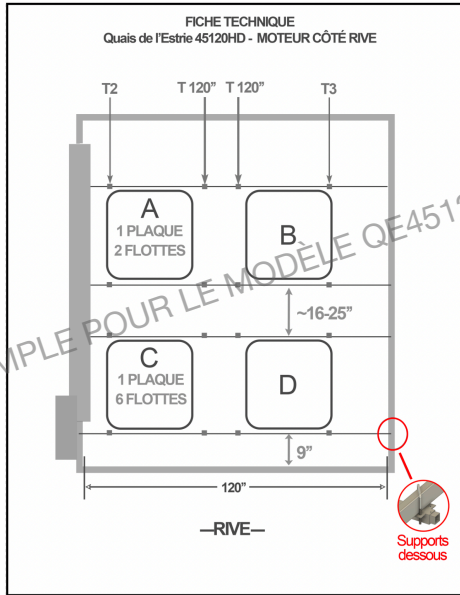
CROSS MEMBER ASSEMBLY - PART 3



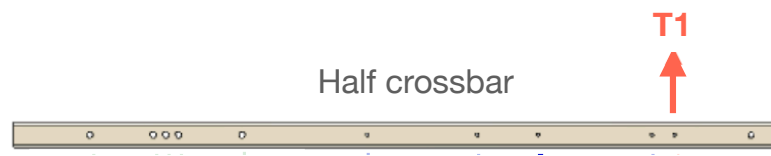
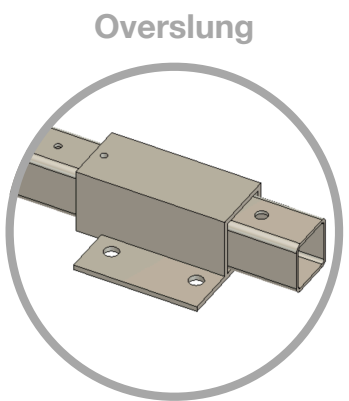
EXEMPLE QE45120HD



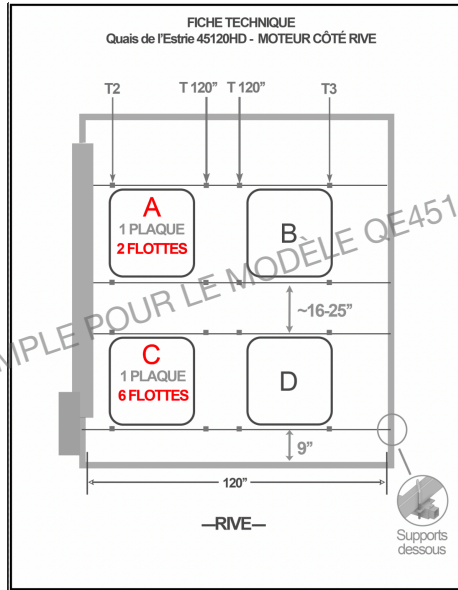
CROSS MEMBER ASSEMBLY - PART 4



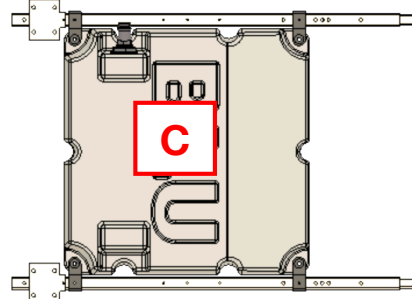
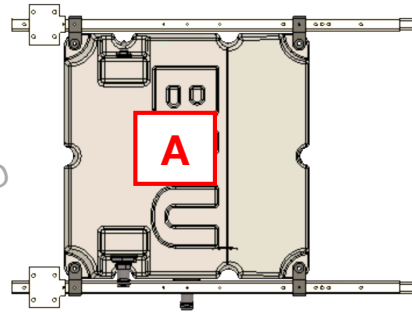
BRACKET UNDER SLUNG



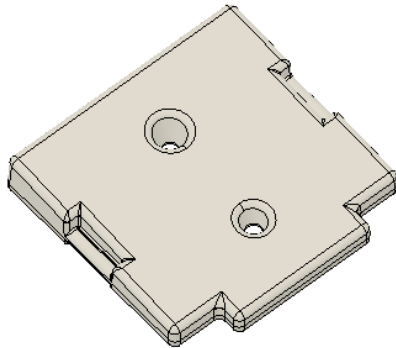
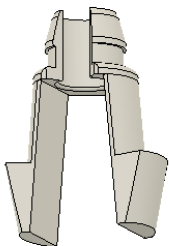
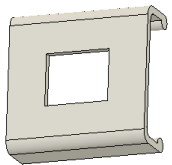
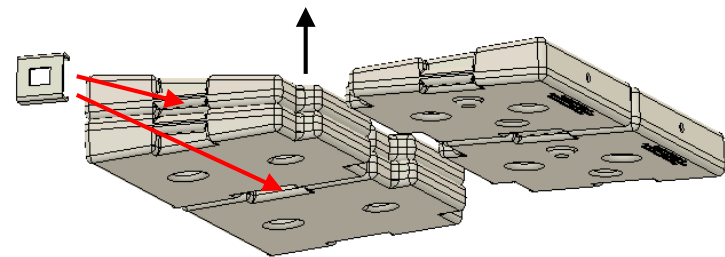
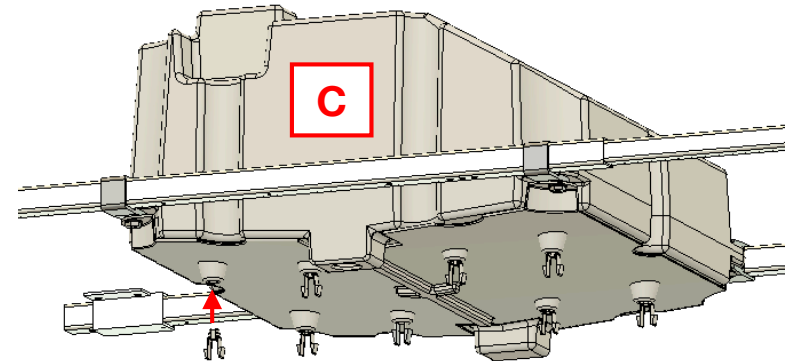
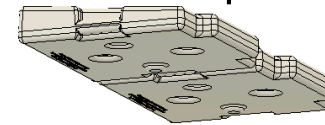
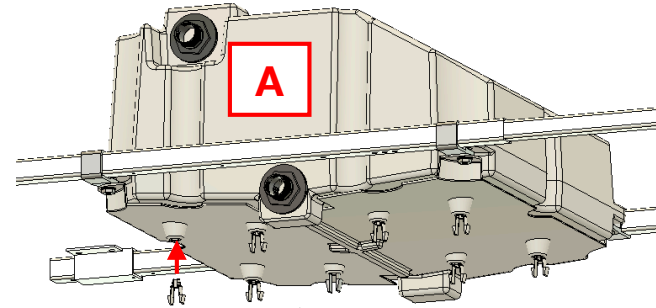
ADDING BALANCING FLOATS



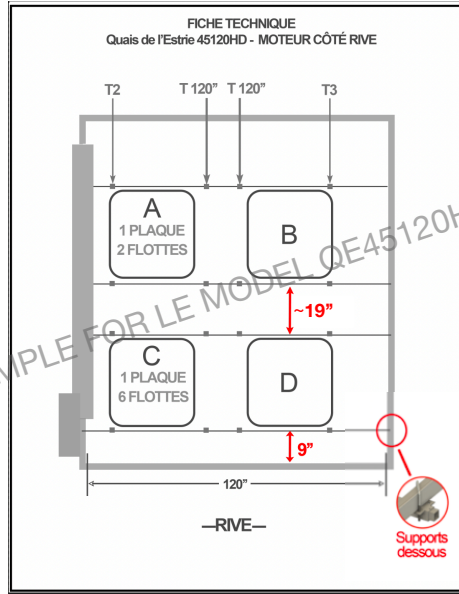
EXEMPLE QE45120HD



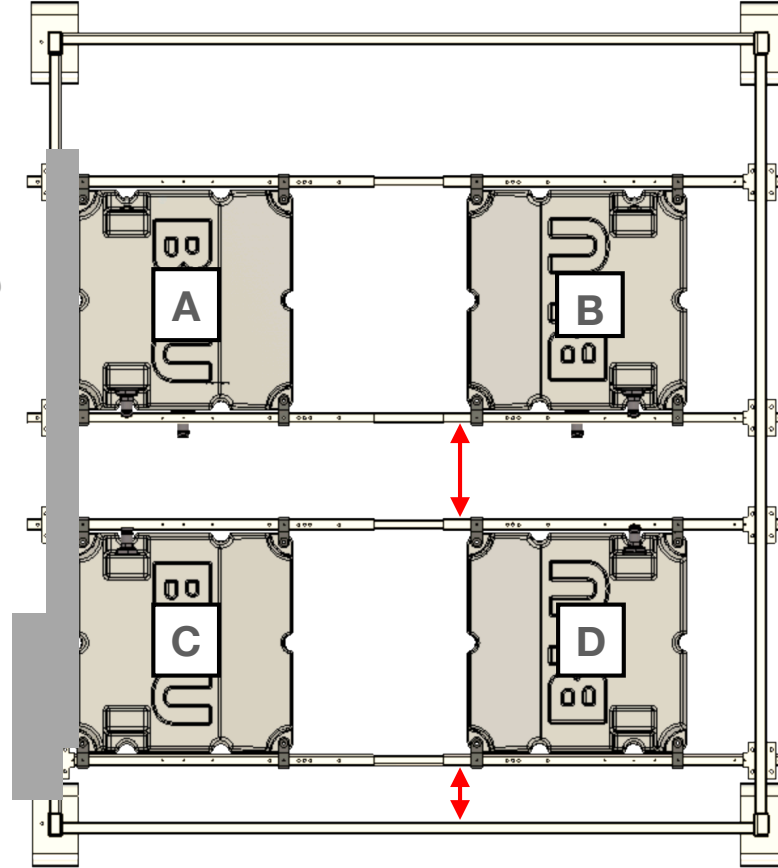
SHORE



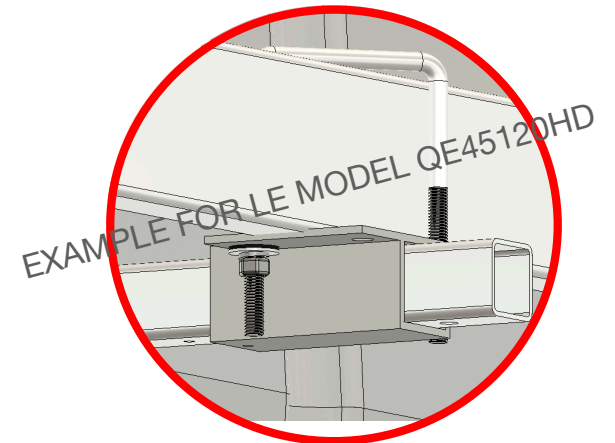
FIXING BALLASTS AND CROSS MEMBERS TO ELEVATOR



EXAMPLE QE45120HD

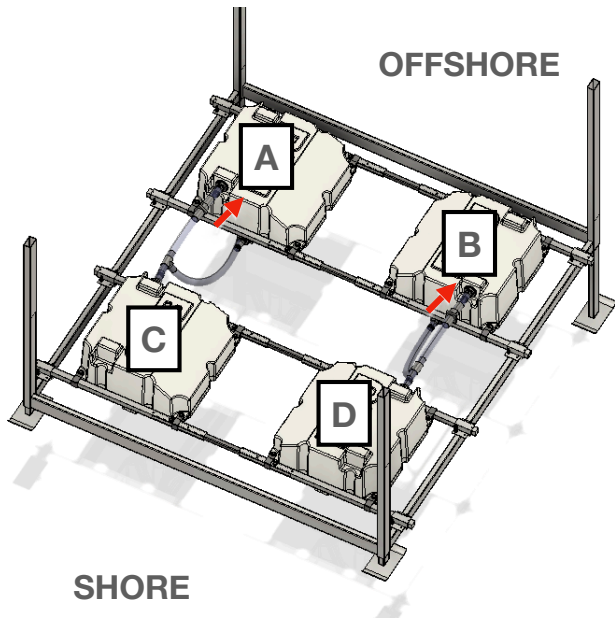


SHORE

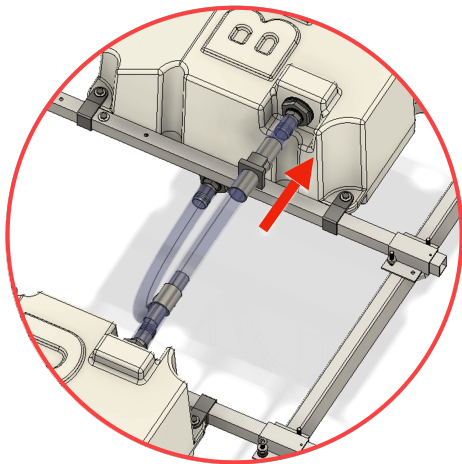
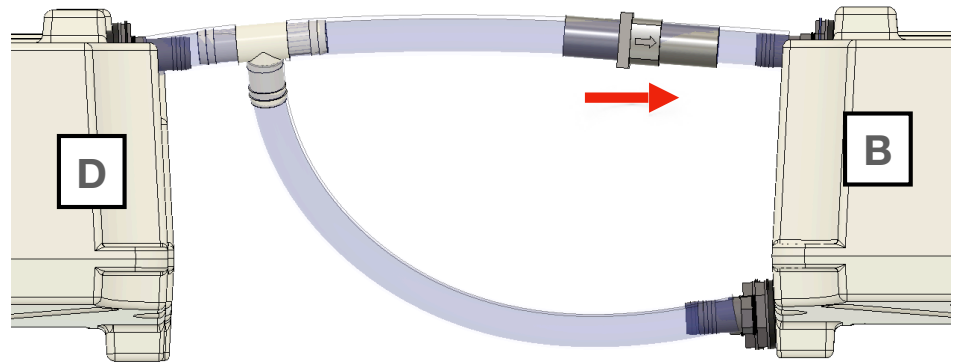
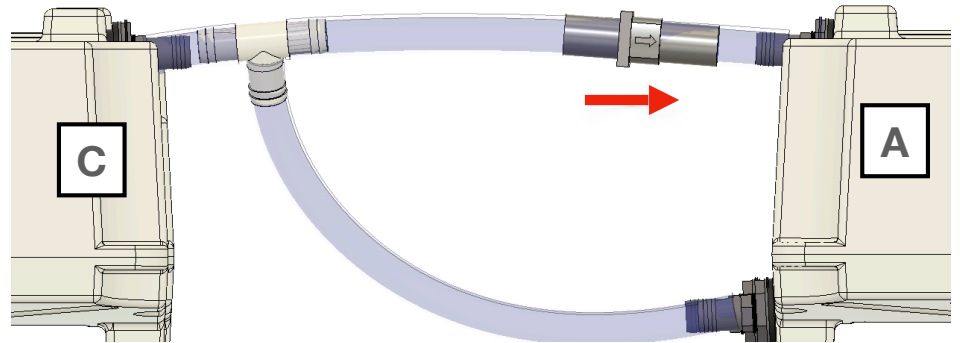


BRACKET
UNDER SLUNG

PLUMBING ASSEMBLY - PART 1



2" FLEXIBLE HOSE

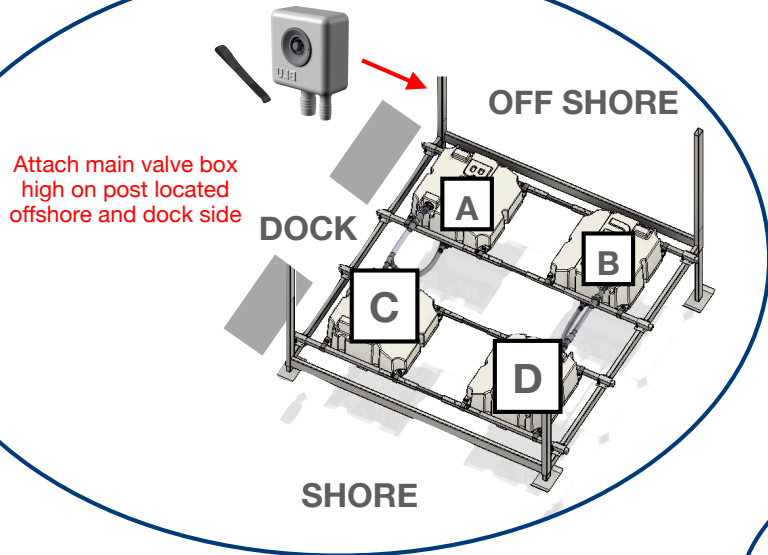


Lubricate hose fittings and inside of hoses. Heat the ends of the hoses to soften them slightly. Insert the hoses into the fittings and secure with clamps.

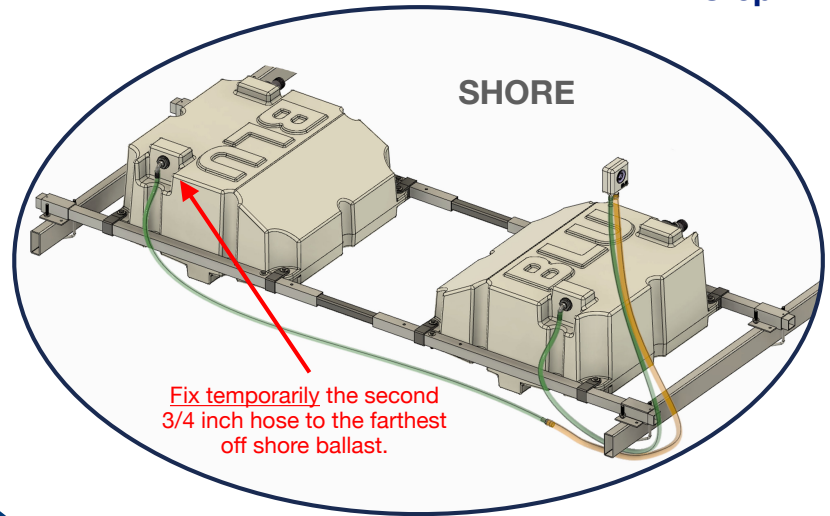


PLUMBING ASSEMBLY - PART 2

Step 1

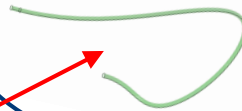


Step 4



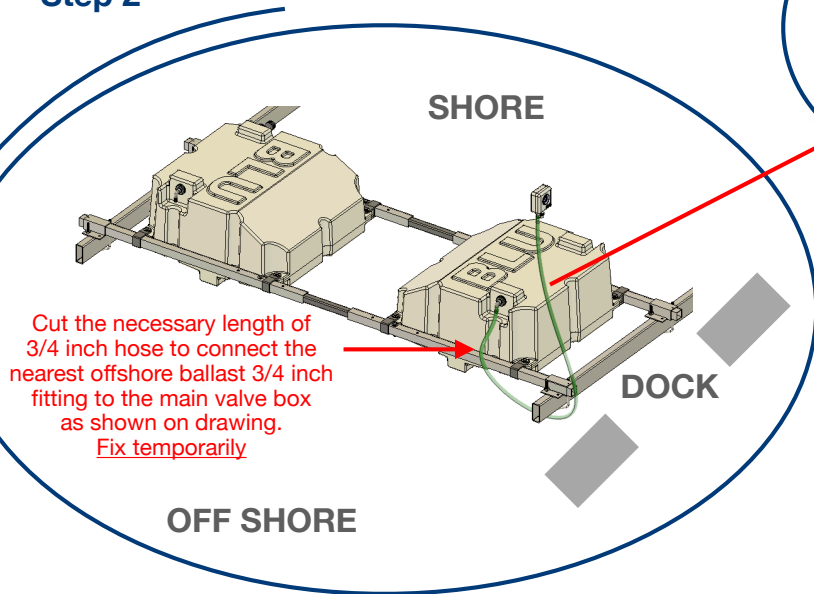
Step 3

Make a second 3/4" hose of t same length

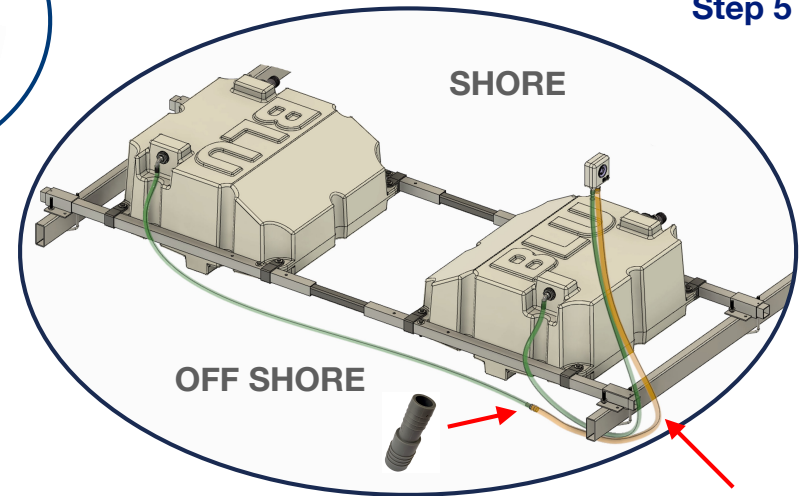


*Hose colors are solely intended for explanatory purposes

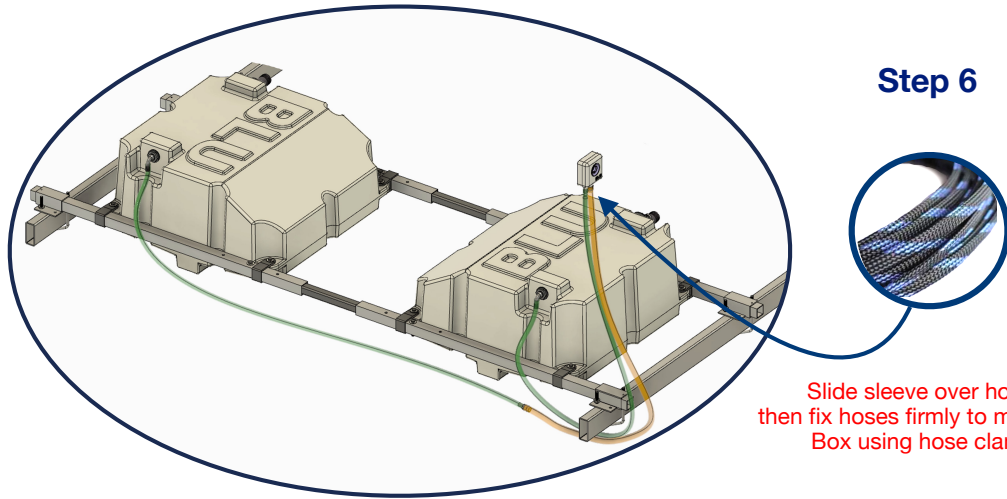
Step 2



Step 5



PLUMBING ASSEMBLY - PART 3



Step 6

Slide sleeve over hoses,
then fix hoses firmly to main valve
Box using hose clamps



To insure air tight jonction, lubricate main valve box hose fittings and the inside of the hoses. Heat the ends of the extremity of the hoses to soften them lightly. Then insert the hoses into the fittings and secure with the clamps.

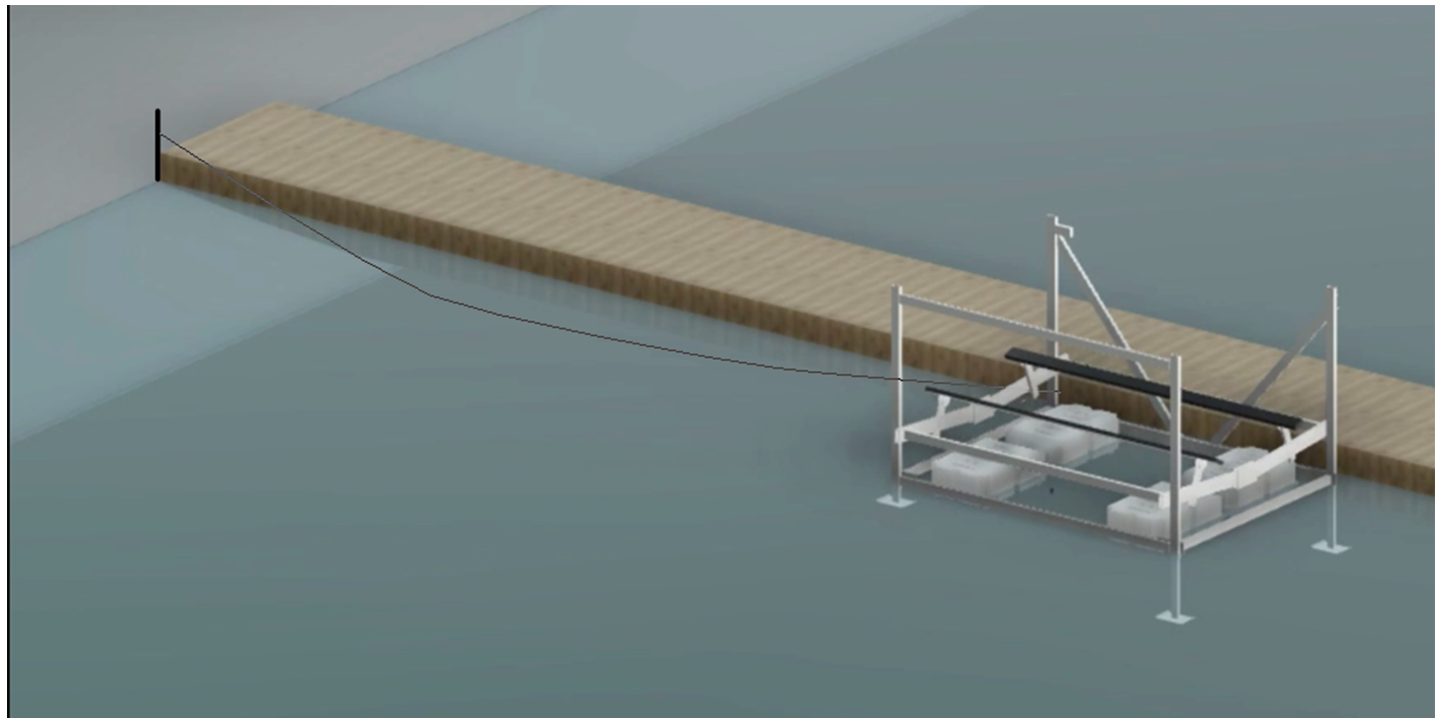


Position marker (optional)

To facilitate spring installation, it is recommended to mark the length of the legs and install a galvanized steel cable (such as a clothes line) between a fixed point on the bank and the elevator to find the exact immersion position from year to year.



Clothes line
(Not included)





Have a great boating season!